

PART OF THE SW.1/4, OF SECTION 9, T.5N., R.2W., S.L.B. & M.
ASPENWOOD ESTATES SUBDIVISION 1ST AMENDMENT

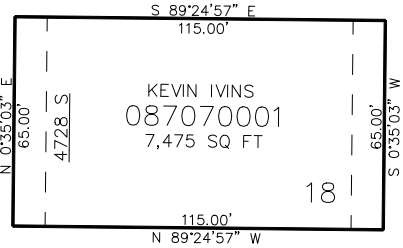
TAXING UNIT: 109

IN ROY CITY
SCALE 1" = 30'

SEE PAGE 679

SEE PAGE 679

4225 WEST ST



SEE PAGE 679

SEE PAGE 679

10' UTILITY & DRAINAGE EASEMENTS EACH
SIDE OF PROPERTY LINES AS INDICATED
BY DASHED LINES EXCEPT AS OTHERWISE
SHOWN.

FOR COMPLETE SURVEY DATA SEE
ORIGINAL DEDICATION PLAT IN
BOOK 96, PAGE 56 OF RECORDS.